



24 Series

24 Series

DELTA-PRO™ DIFFERENTIAL PRESSURE, PRESSURE AND VACUUM SWITCHES



FEATURES

- **Brass, Polysulfone®, and PFA Teflon® Pressure Connections**
- **Compact Size: 3.5" x 2.5" x 2.3"**
- **Adjustable Ranges from 1 to 45 psid, 30" Hg Vac to 90 psi**
- **±1% Repeatability**
- **Terminal block wiring**
- **Optional red status light**

OVERVIEW

The 24 Series Delta-Pro™ pressure, differential pressure and vacuum switches offer a unique blend of compact size, excellent performance, environmental protection and attractive price. Available with brass, polysulfone®, or PFA Teflon® pressure connections the Delta-Pro will stand up in your most corrosive applications. The precision snap-acting switch and sensitive diaphragms combine to provide a narrow deadband and repeatability of approximately ±1% of range span. The convenient, externally accessible adjustment screw is multi-turn to provide easy set point adjustability. The force-balanced design gives the Delta-Pro excellent vibration resistance.

FEATURES

- Vacuum, Pressure or Differential pressure measurement
- Compact size:
3.5" x 2.5" x 2.3"
- 5 A @ 125/250 VAC SPDT snap-acting switch
- External multi-turn adjusting screw
- Complies with enclosure type 4 with watertight conduit fitting



Delta-Pro with Brass Pressure Connections

Delta-Pro with Polysulfone® Pressure Connections



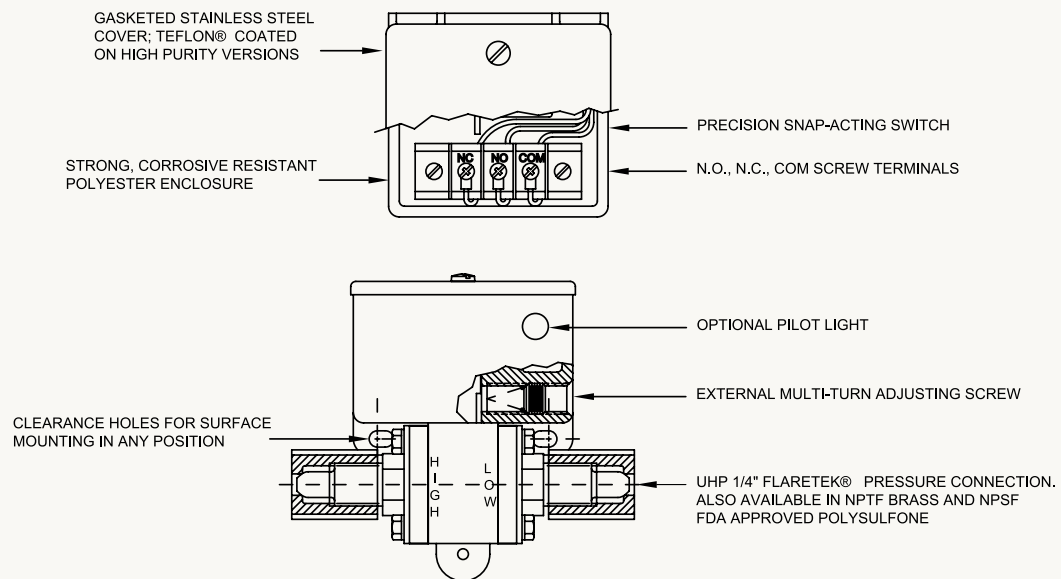
Delta-Pro with Flaretek PFA Teflon® Pressure Connections



APPLICATIONS

Typical applications include filter monitoring and proof-of-flow. High purity versions may also be used to monitor and control deionized water systems, wet benches, cleaning equipment, corrosive gas lines and bulk chemical handling systems.

TECHNOLOGY



The 24 Series (also known as the Delta Pro™) was designed to be a compact, cost-effective differential pressure switch for applications such as proof-of-flow, filter monitoring, etc. It depends on two opposing diaphragms to sense pressure on the "High" and "Low" pressure outputs of a system. The resulting pressure differential is transmitted through a linkage to a snap-action electrical switch, providing an output when a pre-set difference is exceeded. This set point can be easily modified while under pressure via an external adjusting screw. This adjustment "pre-loads" the actuation mechanism, which results in excellent vibration-resistance. Straight pressure and vacuum versions, with a single diaphragm, are also available.

SPECIFICATIONS

STORAGE TEMPERATURE	-20° to 180° F (-29° to 82°C)
AMBIENT TEMPERATURE	30° to 160°F (-1° to 71°C). Set point typically shifts less than ±0.6% of range for a 50°F (28°C) ambient temperature change; consult factory for special ratings
MAX MEDIA TEMPERATURE	200°F (93°C) at 100 psi working pressure; 160°F (71°C) at 100 psi working pressure for models 030, 031
SHOCK	Set point repeats after 15G, 10 millisecond duration. (MIL-STD-810)
VIBRATION	Set point repeats after 2.5 G, 5-500 CPS. (MIL-STD-810)
ENCLOSURE CLASSIFICATION	Complies with enclosure type 4 requirements with optional water tight conduit connector. Reinforced polyester body, stainless steel cover with neoprene gasket. All external hardware Teflon® coated on models 030 and 031
SET POINT REPEATABILITY	Typically ± 1% of span. Application dependent. Consult factory
SWITCH OUTPUT	SPDT precision snap-acting design with mechanical contact life of 10 million cycles. Actual life depends on electrical load and cycle frequency
ELECTRICAL RATING	Rated to 5 A resistive and 5 A inductive (75% PF) at 125 VAC and 250 VAC, 1/4 HP; 5 A resistive and 3 A inductive at 30 VDC and 0.5 A resistive and 0.25 inductive at 125 VDC. Gold clad silver contacts for minimum loads of 5 mA at 6 VDC, 2 mA at 12 VDC and 1 mA at 24 VDC
WEIGHT	6.5 oz.
ELECTRICAL CONNECTION	7/8" hole for optional 1/2" NPT conduit connector. Terminal block with screw terminals. Max wire size 16 AWG
PRESSURE CONNECTION	1/4" NPT (female) Brass; 1/4" NPS (female) FDA approved polysulfone®, non-tapered to minimize connection stress with 1/4" NPT (male) fittings, Max. torque 2 ft. lbs.; 1/4" Flaretek® style connections (nuts provided). Offers high vibration, leak resistant connections with minimal dead volume. On models 030 and 031 pressure connections are PFA Teflon®, nuts are PVD female
MOUNTING & INSTALLATION	Surface mount with two screws through clearance holes, or mount by pressure connections

Teflon® is a registered trademark of E.I. DuPont Company. **Flaretek®** is a registered trademark of Fluoroware, Inc. **Polysulfone®** is a registered trademark of Amoco.

APPROVALS



UL Listed, **cUL** Certified
Pressure: UL 508; CSA C22.2 No. 14-M95 -- File #E42272



CENELEC/TÜV Süddeutschland Bau und Betrieb GmbH (N.B. #0036)
TÜV certified to PED (97/23/EC)
Category IV, Module H1
Certificate #USA 02/04/38/001 thru USA 02/07/38/033



UEC Compliant to LVD (73/23/EC & 93/68/EEC)

MODEL CHART

Model	Adjustable Range		Typical Deadband		***Max. Working Pressure		**Proof Pressure	
	psid	bar	psid	bar	psi	bar	psi	bar
Polyurethane (polyether) diaphragm, ethylene propylene O-Ring, 1/4" NPT (female) brass pressure connection								
013	1 to 10	70 mbar to 0,7	0.75	0,05	150	10	150	10
014	4 to 45	0,3 to 3	1.0	0,07	150	10	150	10
Polyurethane (polyether) diaphragm, ethylene propylene O-Ring, 1/4" NPS (female) (mechanical) polysulfone® pressure connection								
011	1 to 10	70 mbar to 0,7	0.75	0,05	150	10	150	10
012	4 to 45	0,3 to 3	1.0	0,07	150	10	150	10
PFA Teflon® diaphragm, 1/4" Flaretek® PFA Teflon® pressure connection								
030	1 to 10	70 mbar to 0,7	0.75	0,05	100	7	100	7
031	4 to 45	0,3 to 3	1.0	0,07	100	7	100	7
					*Over Range Pressure		**Proof Pressure	
	psi	bar	psi	bar	psi	bar	psi	bar
Polyurethane (polyether) diaphragm, ethylene propylene O-Ring, 1/4" NPS (female) (mechanical) polysulfone® pressure connection								
015	30" to 2" Hg VAC	-1 bar to -70 mbar	2.5" Hg	0,08	150	10	150	10
016	1 to 10	70 mbar to 0,7	0.75	0,05	150	10	150	10
017	4 to 45	0,3 to 3	1	0,07	150	10	150	10
018	10 to 90	0,7 to 6	3	0,21	150	10	150	10
Polyurethane (polyether) diaphragm, ethylene propylene O-Ring, 1/4" NPT (female) connection								
019	30" to 2" Hg VAC	-1 bar to -70 mbar	0,08	150	10	150	10	
020	1 to 10	70 mbar to 0,7	0.75	0,05	150	10	150	10
021	4 to 45	0,3 to 3	1	0,07	150	10	150	10
022	10 to 90	0,7 to 6	3	0,21	150	10	150	10

***Over Range Pressure:** The maximum pressure that may be applied continuously without causing damage and maintaining set point repeatability.

****Proof Pressure:** The maximum pressure to which a pressure sensor may be occasionally subjected, which causes no permanent damage. The unit may require calibration (e.g. start-up, testing).

*****Working Pressure:** The pressure range within which two opposing sensors can be safely operated and still maintain set point adjustability provided the difference in pressure between them does not exceed the designated adjustable range.



HOW TO ORDER

Build a part number by selecting a model and options. Choose the Sensor Type and the Range from the Model Chart. If options are required, add the code from the option list below. Example: 24 030 * M900.

24	030	M900
Select a Type	Select a Model	Select an Option
24	030	M900

**COMPONENTS
CODE**

DESCRIPTION

SERIES DESIGNATION

24 Designation for 24 Series product line

DIFFERENTIAL PRESSURE MODELS *

011, 012	Polyurethane (polyether) diaphragm, ethylene propylene O-Ring, 1/4" NPS (female) (mechanical) polysulfone® pressure connection
013, 014	Polyurethane (polyether) diaphragm, ethylene propylene O-Ring, 1/4" NPT (female) brass pressure connection
030, 031	PFA Teflon® diaphragm, 1/4" Flaretek® PFA Teflon® pressure connection *(See Model Chart for Differential Pressure Ranges)

PRESSURE MODELS *

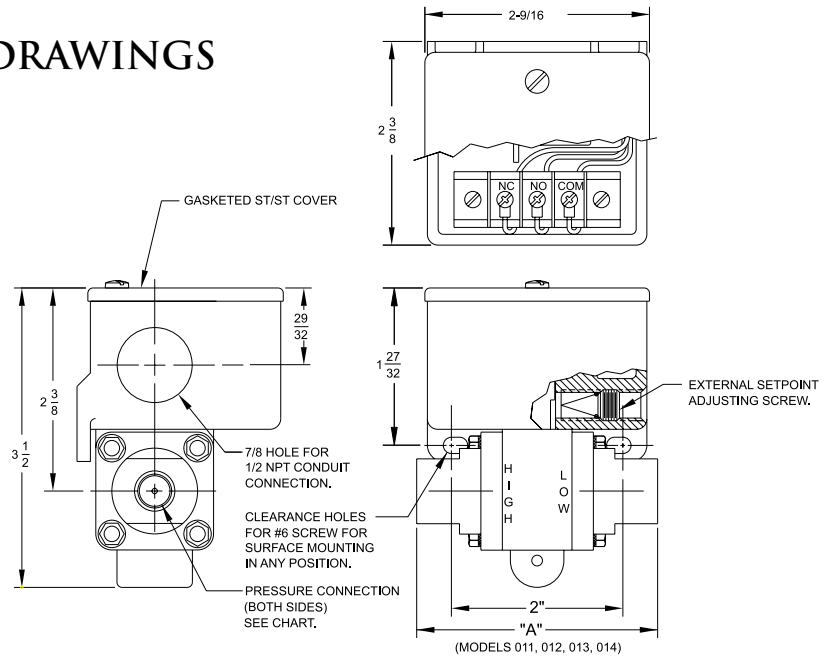
015, 016, 017, 018	Polyurethane (polyether) diaphragm, ethylene propylene O-Ring, 1/4" NPS (female) (mechanical) polysulfone pressure connection
019, 020, 021, 022	Polyurethane (polyether) diaphragm, ethylene propylene O-Ring, 1/4" NPT (female) brass pressure connection *(See Model Chart for Pressure Ranges)

OPTIONS

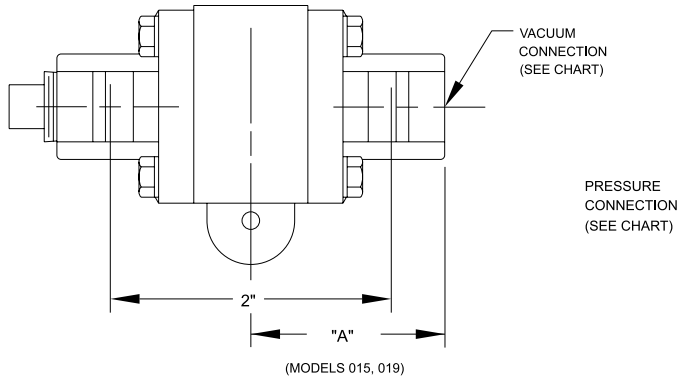
M020	Red status light, 115 VAC only. Specify whether light turns on or off with increasing or decreasing pressure
M201	Factory set one switch; specify increasing or decreasing pressure and set point
M262	Buna-N diaphragm and O-Ring: not available on models 030, 031
M277	Range indicated on nameplate in kPa or MPa
M278	Range indicated on nameplate in Kg/cm ²
M407	CE Compliance to Pressure Equipment Directive (category IV) NOT AVAILABLE MODELS 015, 019, 030, 031
M540	Viton® construction (deadbands and low end of range may increase slightly. Consult factory.) Wetted parts include Viton® diaphragm and/or O-Ring plus standard connection material. Not available on models 030, 031
M900	Water tight conduit fitting; converts 7/8" hole to 1/2" NPT fitting; must specify for compliance

DIMENSIONAL DRAWINGS

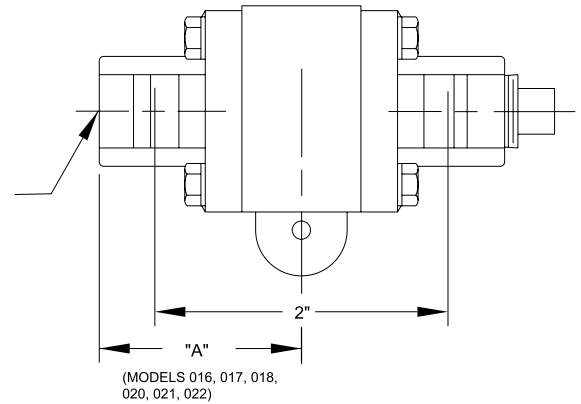
Models 011, 012, 013 & 014



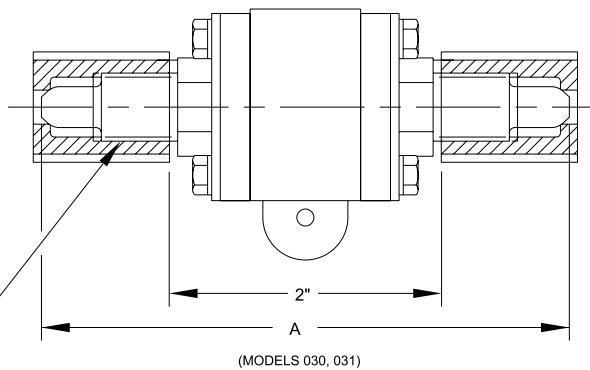
Models 015 & 019



Models 016, 017, 018, 020, 021 & 022



Models 030 & 031



1/4" FLARETEK® STYLE,
PRESSURE CONNECTIONS & NUTS
2 PLACES

Model	DIMENSION A	Pressure Connection
011, 012	2.75" (69.99mm)	1/4" NPS (F) Polysulfone
013, 014	3.13" (79.5mm)	1/4" NPT (F) Brass
015, 016, 017, 018	1.44" (36.5mm)	1/4" NPS (F) Polysulfone
019, 020, 021, 022	1.56" (39.6mm)	1/4" NPT (F) Brass
030, 031	4.00" (101.6mm)	1/4" Flaretek® Teflon

RECOMMENDED PRACTICES AND WARNINGS

United Electric Controls Company recommends careful consideration of the following factors when specifying and installing UE pressure and temperature units. Before installing a unit, the Installation and Maintenance instructions provided with unit must be read and understood.

- To avoid damaging unit, proof pressure and maximum temperature limits stated in literature and on nameplates must never be exceeded, even by surges in the system. Operation of the unit up to maximum pressure or temperature is acceptable on a limited basis (e.g., start-up, testing) but continuous operation must be restricted to the designated adjustable range. Excessive cycling at maximum pressure or temperature limits could reduce sensor life.
- A back-up unit is necessary for applications where damage to a primary unit could endanger life, limb or property. A high or low limit switch is necessary for applications where a dangerous runaway condition could result.
- The adjustable range must be selected so that incorrect, inadvertent or malicious setting at any range point cannot result in an unsafe system condition.
- Install unit where shock, vibration and ambient temperature fluctuations will not damage unit or affect operation. Orient unit so that moisture does not enter the enclosure via the electrical connection. When appropriate, this entry point should be sealed to prevent moisture entry.
- Unit must not be altered or modified after shipment. Consult UE if modification is necessary.
- Monitor operation to observe warning signs of possible damage to unit, such as drift in set point or faulty display. Check unit immediately.
- Preventative maintenance and periodic testing is necessary for critical applications where damage could endanger property or personnel.
- For all applications, a factory set unit should be tested before use.
- Electrical ratings stated in literature and on nameplate must not be exceeded. Overload on a switch can cause damage, even on the first cycle. Wire unit according to local and national electrical codes, using wire size recommended in installation sheet.
- Do not mount unit in ambient temp. exceeding published limits.

LIMITED WARRANTY

Seller warrants that the product hereby purchased is, upon delivery, free from defects in material and workmanship and that any such product which is found to be defective in such workmanship or material will be repaired or replaced by Seller (Ex-works, Factory, Watertown, Massachusetts, INCOTERMS); provided, however, that this warranty applies only to equipment found to be so defective within a period of 24 months from the date of manufacture by the Seller. Seller shall not be obligated under this warranty for alleged defects which examination discloses are due to tampering, misuse, neglect, improper storage, and in any case where products are disassembled by anyone other than authorized Seller's representatives. EXCEPT FOR THE LIMITED WARRANTY OF REPAIR AND REPLACEMENT STATED ABOVE, SELLER DISCLAIMS ALL WARRANTIES WHATSOEVER WITH RESPECT TO THE PRODUCT, INCLUDING ALL IMPLIED WARRANTIES OF MERCHANTABILITY OR FITNESS FOR ANY PARTICULAR PURPOSE.

LIMITATION OF SELLER'S LIABILITY

Seller's liability to Buyer for any loss or claim, including liability incurred in connection with (i) breach of any warranty whatsoever, expressed or implied, (ii) a breach of contract, (iii) a negligent act or acts (or negligent failure to act) committed by Seller, or (iv) an act for which strict liability will be inputted to seller, is limited to the "limited warranty" of repair and/or replacement as so stated in our warranty of product. In no event shall the Seller be liable for any special, indirect, consequential or other damages of a like general nature, including, without limitation, loss of profits or production, or loss or expenses of any nature incurred by the buyer or any third party.

UE specifications subject to change without notice.

U.S. SALES OFFICES

United Electric Controls
32 Highland Rd.
South Hampton, NH 03827
Phone: 603-394-0078
FAX: 603-394-0175

United Electric Controls
28 N. Wise Ave.
Freeport, IL 61032
Phone: 815-235-3501
FAX: 815-235-3847

United Electric Controls
1022 Vineyard Drive
Conyers, GA 30013
Phone: 770-483-8400
FAX: 770-929-8716

United Electric Controls
5829 Grazing Court
Mason, OH 45040
Phone: 513-398-3175
FAX: 513-398-3076

United Electric Controls
27 Summit Terrace
Sparta, NJ 07871
Phone: 973-271-2550
FAX: 973-729-6099

United Electric Controls
102 Salazar Court
Clayton, CA 94517
Phone: 925-524-0210
FAX: 925-524-0210

United Electric Controls
4306 Lakeshore Forest Drive
Missouri City, TX 77459
Phone: 281-431-8134
FAX: 281-431-8158

INTERNATIONAL OFFICES

AUSTRALIA
United Electric Controls
(Australia) PTY Ltd
Unit 2, 615 Warrigal Road
Locked Bag 600
Ashburton, Victoria
3147, Australia
Phone: 613-9567-0750
FAX: 613-9567-0755

BELGIUM
United Electric Controls-Europe
G. Van Gervenstraat 19A
B-9120 Beveren-Waas, Belgium
Phone: 32-37554-383
FAX: 32-37552-747

CANADA
United Electric Controls
(Canada) Ltd
5320 Bradco Boulevard
Mississauga, Ontario
L4W 1G7 Canada
Phone: 905-625-5082
FAX: 905-625-5709

GERMANY
United Electric Controls
An Der Zentlinde 21
D-64711 Erbach, Germany
Phone: 496-062-7400
FAX: 496-062-7501

MALAYSIA
United Electric Controls, Far East
No. 1-2-2, 2nd Floor
Jalan 4/101C
Cheras Business Centre
Batu 5, Jalan Cheras
56100 Kuala Lumpur, Malaysia
Phone: 603-9133-4122
FAX: 603-9133-4155



UNITED ELECTRIC
CONTROLS

180 Dexter Avenue, P.O. Box 9143
Watertown, MA 02471-9143 USA
Telephone: 617 926-1000 Fax: 617 926-2568
<http://www.ueonline.com>

EMC05000403